

ANALYSIS OF THE MONTH



Outcomes from the B20 Brasil Presidency and Way Forward by Dan Ioschpe

In 2024, under the stewardship of the Brazilian Presidency, the G20 has renewed its commitment to an inclusive agenda that surpasses core global economic challenges. This agenda is characterized by a strategic embrace of profound humanitarian imperatives, actively engaging member nations in the advancement of social inclusion and combating hunger.

19/12/2024

[Read More](#)

Tracking Policy Recommendations across the Previous 3 B20 Presidencies

The B20 serves as an important platform for the businesses of B20 countries and the global community to share perspective on the global business climate and improve economic growth, trade and inclusive development. Under the previous three B20 presidencies, working groups developed policy recommendations along similar thematic areas to align B20 members and steer policy action.

[Read More](#)

01/10/2025



Green Skills for Driving the Green Transition

The world currently faces significant environmental challenges and the transition towards sustainable practices has become imperative for ensuring a safer planet for current and future generations. By equipping individuals and organizations with the requisite expertise for implementing innovative and sustainable practices, green skills can play a vital role in driving the transformation to a greener economy.

01/08/2025

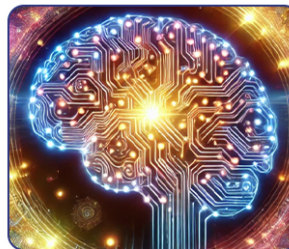
[Read More](#)

Overview of B20 AI Platform

Artificial Intelligence (AI) is a revolutionary technology that has the capacity and transformative power to dramatically impact the functioning and efficiency of global governance, commerce, and culture. As defined by Google, AI refers to technologies that enable computers to perform advanced functions including the ability to comprehend language.

[Read More](#)

01/02/2025



SME Participation in the Circular Economy

The conventional manufacturing and consumption economy hinges on a model of converting raw materials into usable products, which are then disposed of. According to the UNEP Global Waste Management Outlook 2024, municipal solid waste alone contributes 21 billion tonnes of waste, and accelerates climate change, adds to pollution and exacerbates biodiversity loss.

12/31/2024

[Read More](#)

Strengthening G20 Value Chains: Leveraging Technology and Collaboration

Global trade in 2023 expanded to USD 30.5 trillion with USD 24 trillion of merchandise trade and USD 6.5 trillion of services trade. World merchandise trade, however, declined by 4.9% in value terms compared to the previous year, due to unfavorable trends in exchange rates and lower prices for primary commodities.

[Read More](#)

12/20/2024

